

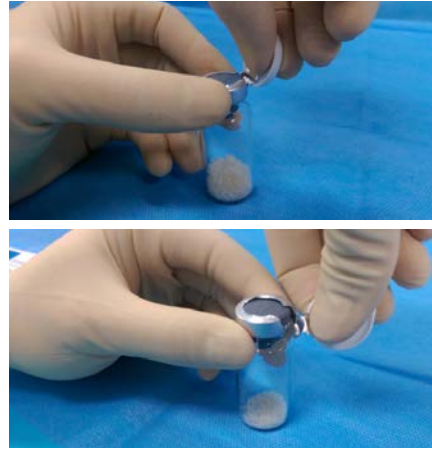
Initial Graft Preparation

1.



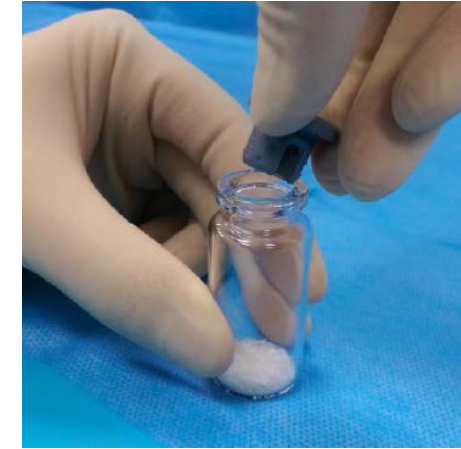
Peel open the foil pouch and transfer the inner bottle as single unit into the sterile field.

2.



Place the bottle on a flat, firm surface. Remove the white cap and aluminum collar.

3.



Slowly remove the rubber stopper. The unit is now ready for application.

Application Guidelines

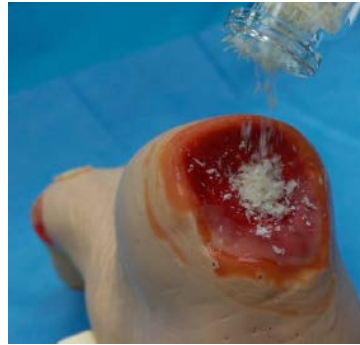
| Size | Dry Application | Wet Application | | |
|--------|--------------------|------------------------------|-------------------------|---------------------------|
| | Dry Coverage (cm)* | Saline for Rehydration (ml)* | Rehydrated Volume (cc)* | Rehydrated Coverage (cm)* |
| 40 mg | 2 x 4 | 0.2 | 0.10 – 0.15 | 1 x 1 |
| 80 mg | 4 x 4 | 0.4 | 0.25 – 0.30 | 1 x 1.5 |
| 160 mg | 4 x 8 | 0.8 | 0.30 – 0.35 | 1.5 x 2 |

*Actual area of coverage and rehydrated volumes may vary based on clinical technique.

Dry Application

Use “Dry Coverage” values in the Application Guidelines to choose the AmnioBand® Particulate unit size that best matches the size of the wound being treated.

1.



Sprinkle dry particulate onto the wound. If needed, particles can be spread to the user's preference.

2.



If desired, sterile saline can be dripped onto the applied particulate to rehydrate and to aid in spreading and contouring to the wound surface.

Wet Application

Use “Rehydrated Volume” and “Rehydrated Coverage” values in the Application Guidelines to choose the AmnioBand® Particulate unit size that best matches the size of the wound being treated.

1.



Add sterile saline directly to the particulate according to the values in Application Guidelines.

2.



Using a sterile spatula, mix the particulate until it is uniformly hydrated.

3.



Using a sterile spatula, remove the particulate mixture from the bottle.

4.



Apply the particulate mixture to the wound. If needed, spread and contour to wound surface.

